

Toreador Song (from Carmen)

Flute

5

mf

f

6

9

mf

11

13

f

16

Toreador Song (from Carmen)

Clarinet

5

6

9

11

13

16

mf

f

mf

f

Toreador Song (from Carmen)

Bass Clarinet

5



9



13



16



Toreador Song (from Carmen)

Alto Sax

Musical score for Alto Saxophone, 4/4 time signature. The score consists of four staves of music. The first staff begins with a *mf* dynamic and includes a measure marked with a boxed '5'. The second staff starts at measure 6 and includes a measure marked with a boxed '9'. The third staff starts at measure 11 and includes a measure marked with a boxed '13'. The fourth staff starts at measure 16 and ends with a double bar line. Dynamics include *mf* and *f*, with accents and hairpins used throughout.

Toreador Song (from Carmen)

Tenor Sax/Baritone TC

5

6

9

11

13

16

mf

f

mf

f

Toreador Song (from Carmen)

Bari. Sax

Musical score for Bari. Sax, measures 1-16. The score is in 4/4 time and consists of four staves. Measure numbers 5, 9, 13, and 16 are indicated in boxes above the staves. Dynamics include *mf* and *f*. The score includes various musical notations such as accents, slurs, and dynamic markings.

Measure 1: *mf*, accent on first note.

Measure 5: *f*, accent on first note.

Measure 9: *mf*, slur over last two notes.

Measure 13: *f*, slur over last two notes.

Measure 16: *f*, slur over last two notes.

Toreador Song (from Carmen)

Trumpet

5

6

9

11

13

16

mf

f

mf

f

Toreador Song (from Carmen)

Horn

Musical score for Horn part of Toreador Song (from Carmen). The score is written in 4/4 time, B-flat major, and consists of 16 measures. The key signature has two flats (B-flat and E-flat). The score is divided into four systems, each starting with a measure number in a box: 5, 9, 13, and 16. The first system (measures 1-5) starts with a *mf* dynamic and ends with a *f* dynamic. The second system (measures 6-9) starts with a *mf* dynamic. The third system (measures 10-13) starts with a *f* dynamic. The fourth system (measures 14-16) ends with a double bar line. The score includes various musical notations such as slurs, accents, and dynamic markings.

Toreador Song (from Carmen)

Trombone

5

mf

f

6

mf

9

11

f

13

16

Toreador Song (from Carmen)

Euphonium

5

mf

f

6

mf

11

13

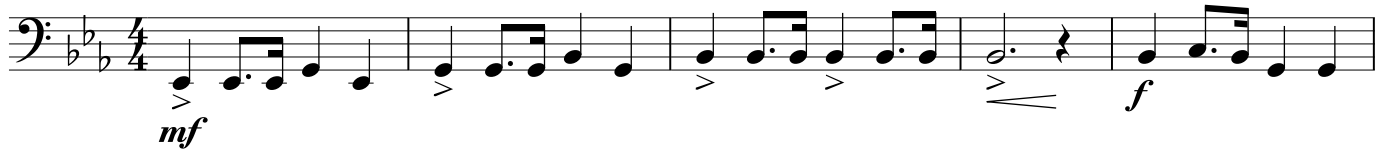
f

16

Toreador Song (from Carmen)

Tuba

5



9



13



16



Toreador Song (from Carmen)

Mallets

5

mf

f

6

9

mf

11

13

f

16

Toreador Song (from Carmen)

Snare Drum

Musical notation for snare drum, measures 1-4. The piece is in 4/4 time. The first three measures feature a rhythmic pattern of quarter notes and eighth notes, marked *mf*. The fourth measure features a more complex rhythmic pattern with sixteenth notes, marked *mp* and *f*.

5

Musical notation for snare drum, measures 5-8. The first two measures continue the rhythmic pattern from measure 4, marked *mf*. The last two measures feature a new rhythmic pattern with eighth notes and quarter notes, marked *f*.

9

Musical notation for snare drum, measures 9-11. The first two measures feature a rhythmic pattern with eighth notes and quarter notes, marked *f*. The third measure features a new rhythmic pattern with quarter notes and eighth notes, marked *mf*.

13

Musical notation for snare drum, measures 12-14. The first two measures feature a rhythmic pattern with eighth notes and quarter notes, marked *mp* and *f*. The third measure features a new rhythmic pattern with quarter notes and eighth notes, marked *f*.

15

Musical notation for snare drum, measures 15-17. The first two measures feature a rhythmic pattern with quarter notes and eighth notes, marked *mf*. The third measure features a new rhythmic pattern with eighth notes and quarter notes, marked *f*.